

ecooustic[®] moov



INSTYLE

Ecoustic® Moov

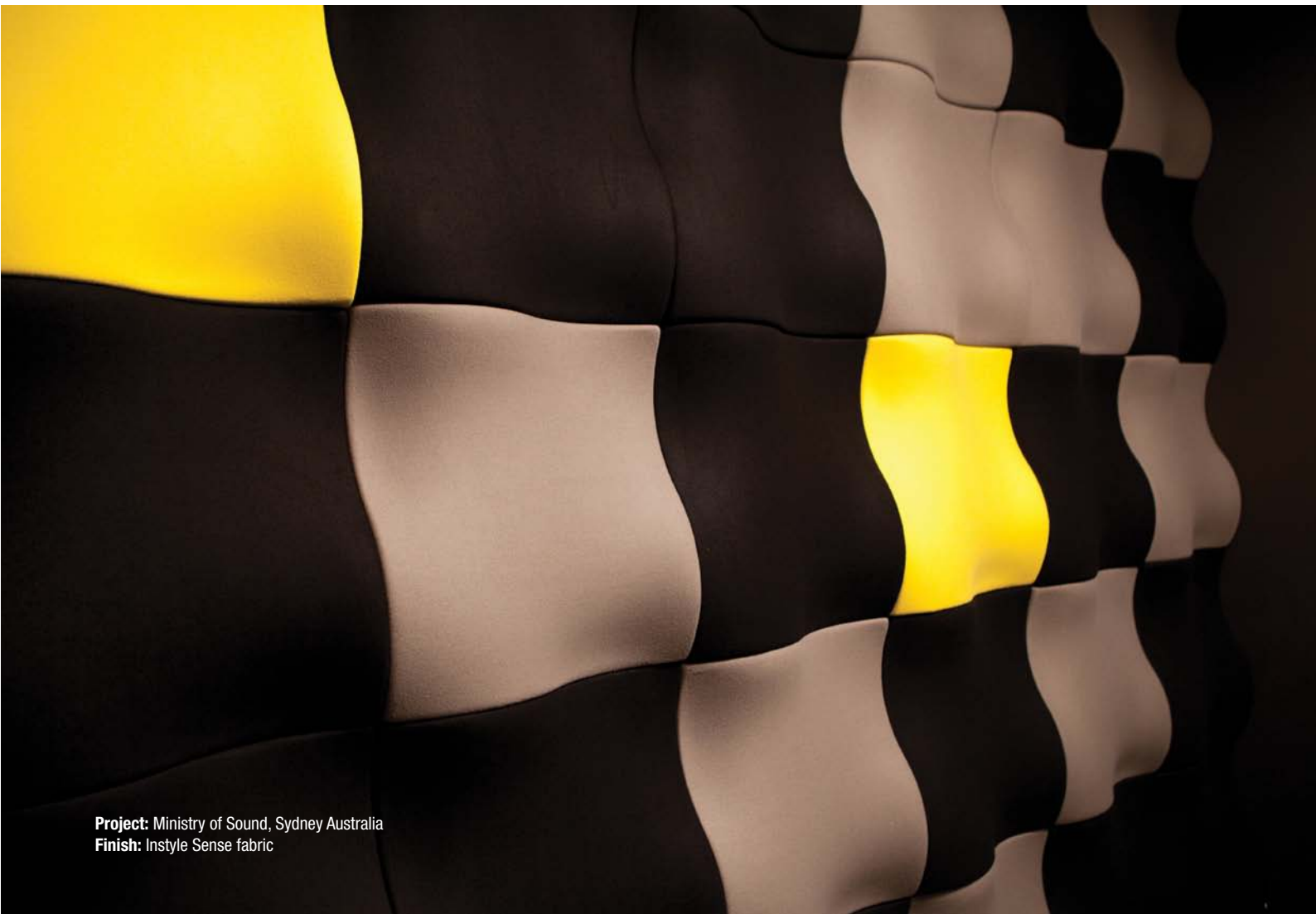
Ecoustic® Moov is an elegant wall and ceiling panelling tile designed to provide excellent broadband sound absorption in any interior space such as boardrooms, restaurants, theatres and auditoriums.

After extensive research and development, Ecoustic® Moov represents a highly effective, innovative engineered solution to acoustic challenges without sacrificing aesthetics.

Achieving an outstanding NRC (noise reduction coefficient) result of 0.9, the smooth hyperbolic curves of Ecoustic® Moov will transform any wall or ceiling into a functional and sensuous felt expanse.

The installation of Ecoustic® Moov can be customised through the use of colour and the formation of shapes created by multiple tiles. Ecoustic® Moov is available in a wide range of colourways, which can be installed in a single colour or in a mix of colour combinations.

Quick and simple to install, the rear-mounting sound chamber tile can be fixed to most surfaces by simply screwing or fixing to the wall, while the Ecoustic® Moov Tile easily self-fastens in place onto the sound chamber tile.



Ecoustic® Felt Finishes



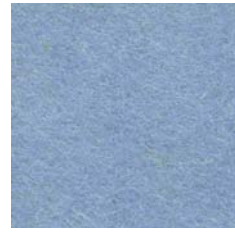
White



Yellow



Orange



Sky



Cream



Lime



Red



Cobalt



Natural



Green



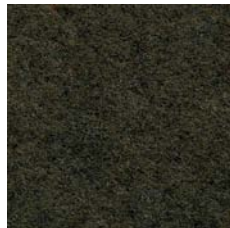
Light Grey



Charcoal



Taupe



Caper



Pewter



Jet

Edging Profiles

Ecoustic® Moov can be installed without edging or with edging made from aluminium with a natural anodised finish. Both straight and curved edging profiles are available.



Straight Profile



Curved Profile



No Profile

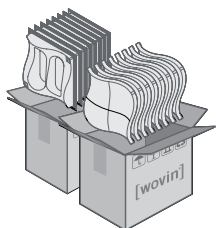
ECOUSTIC® MOOV INSTALLATION + CARE



INSTYLE

ASSEMBLY INSTRUCTIONS

Supplied



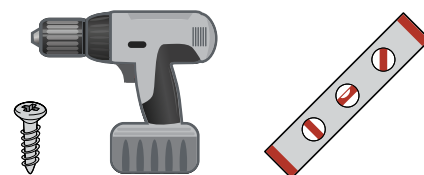
8 x Ecoustic® Moov tiles
 Sold in packs of 8 per colour
 8 x Sound Chambers
 Flat packed separately

Optional Aluminium Frame



Curved or Straight profile aluminium frames
 6 x 1000mm lengths per pack
 [3 x left hand lengths + 3 x right hand lengths]

Tools Required



Power drill + screws
 Flat-head c/sunk
 25mm (1/4 ") 10g
 [4-8 per tile]

Spirit level

FRAME INSTALLATION

Step 1

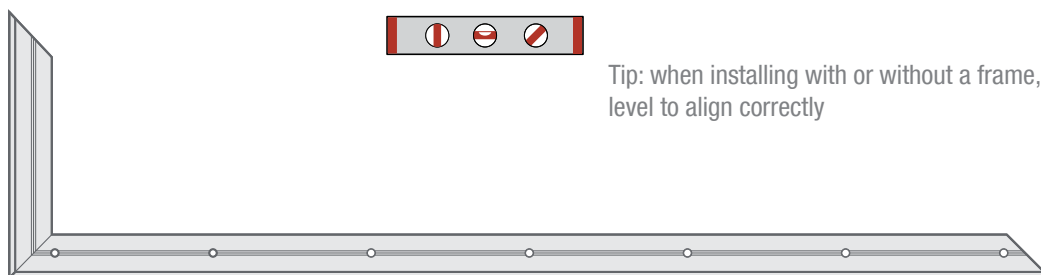
Starting from bottom left hand corner drill all screw holes along the centre groove of the extruded aluminium.

Step 2

Using references such as the floor, measure and mark where the frame is to be positioned.

Step 3

Screw aluminium extrusions into subsurface.



Tip: when installing with or without a frame, use a spirit level to align correctly

TILE INSTALLATION

Step 1

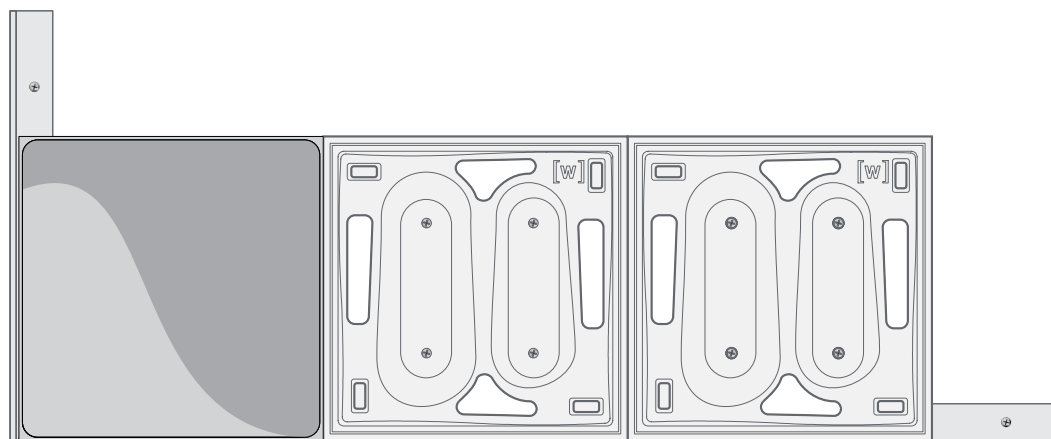
Starting from bottom left hand corner, use a drill to install the first Sound Chamber. Make sure the [w] is located top right of the Sound Chamber.

Step 2

Align the next Sound Chamber next to the first and then repeat step 1.

Step 3

Align the Moov tile correctly with the Sound Chamber at the Velcro strips and apply pressure on all 4 corners.



Please Note

- Care must be taken when cleaning as these instructions apply to the fabric face only and the possible effect of the cleaning regime on underlying sound chamber and wall surface must be considered
- For these reasons it is suggested to spot clean only and that it be carried out by a professional cleaner

Regular Care

- Protect from direct heat and sunlight
- To prevent dust build up, lightly dust with a soft cloth or vacuum with a soft brush attachment

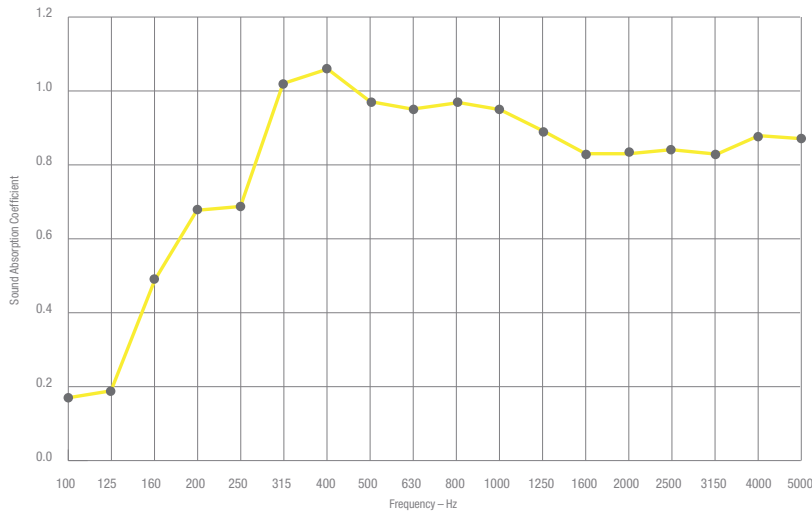
Cleaning

- Professional cleaning is always recommended
- Always test any any cleaning products on an inconspicuous area prior to commencing cleaning
- Blot any excess spills from the material with a dry clean sponge or cloth
- Treat all stains and spills as soon as possible
- Most marks can be spot cleaned by lightly wetting the affected area with a mild detergent and warm water solution
- Do not saturate the tile
- Do not scrub or abrade the tile surface as this will affect the surface finish
- Once the stain or mark has been loosened then blot the excess solution out with a dry clean sponge or cloth
- Sponge afterwards with clean warm water and dry any excess moisture with a dry clean sponge or cloth
- The fabric can also be spot cleaned with dry cleaning fluid, lightly sponge a small amount of dry cleaning fluid and blot
- Dry away from direct heat and sunlight
- Do not use carpet shampoo

Acoustic Information

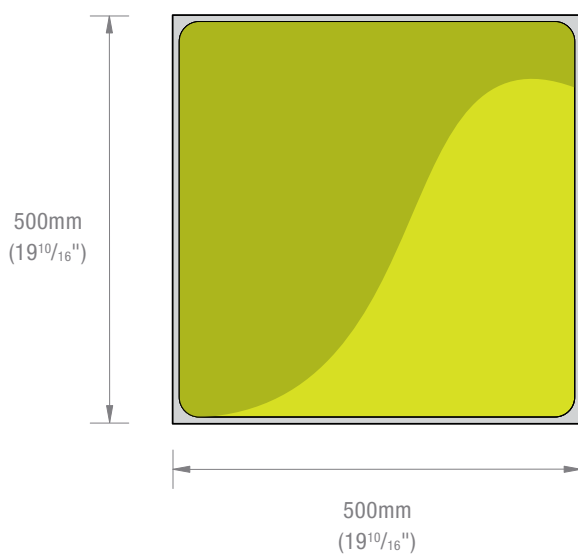
Ecoustic® Moov provides a design solution that significantly reduces unwanted noise. Ecoustic® Moov achieves an impressive NRC result of 0.9, with consistent performance in the medium to high frequencies. Ecoustic® Moov is ideal for use in a variety of interior spaces, including restaurants, offices, theatres, auditoriums and public buildings, where the control of sound is essential.

NRC	0.90
Weighted Sound Absorption Coefficient α_w	0.95
Maximum Sound Absorption	Class A

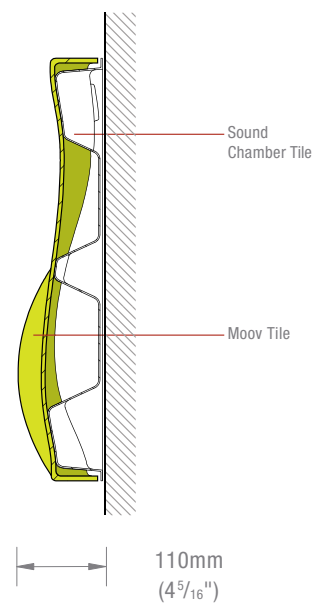


Ecoustic® Moov Tile

Front View



Side View



Please refer to website for full product information, CAD drawings and contact details